

Join the movement for community-led development in the coffee sector!



Through our **Community-Led Development (CLD) Incubator** program, we build relationships with emerging and established organizations in coffee-growing regions of Latin America and East/Central Africa, providing access to often first-time funding for their community-driven initiatives. Each participant organization designs, executes, and measures a community project in collaboration with their community members, leading to increased income generation, knowledge development, women and youth participation in agriculture, greater climate resilience, and more.

Our Community-Led Development Incubator



Our Impact

Incubator participants have implemented community projects in the following areas:



Transformative Infrastructure



Education



Food Sovereignty



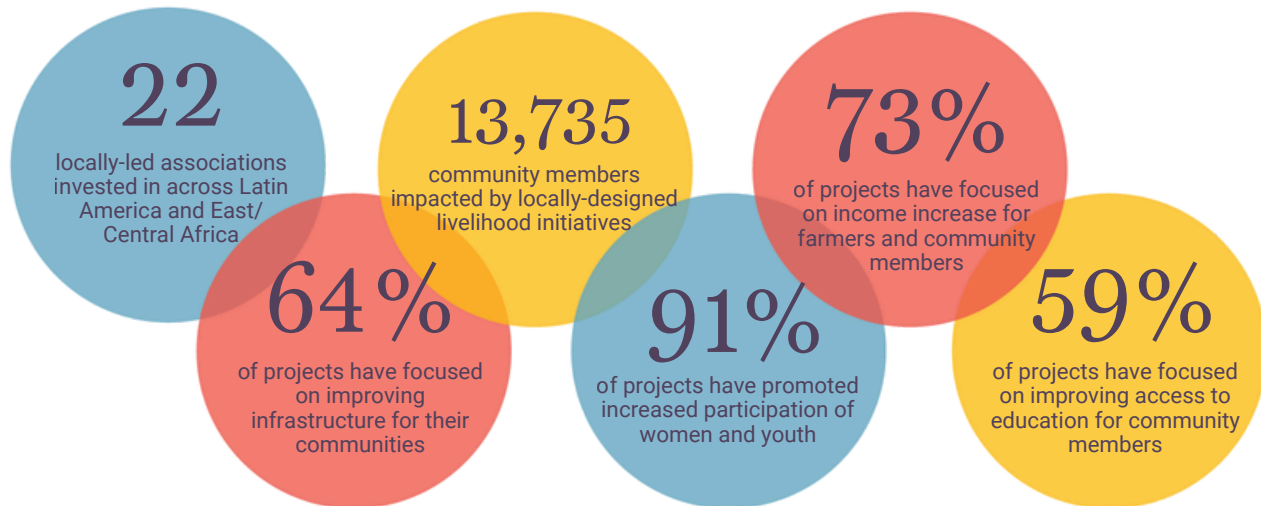
Alternative Income



Clean Water & Climate Resilience



Gender Equity & Youth Inclusion



The fact that we involve the community in deciding what they really feel is the best solution to the problems that are affecting them is the only way we can bring about sustainable development to our communities. TCC is an organization that empowers other community organizations to best transform the communities they live in, and we are proud to be part of those communities.

Winnie Ainembaanazi, Girl Power Foundation Uganda
2023-2024 Incubator Participant



Case Study

Jovemcafé is a group of 25 young women coffee entrepreneurs in Com, Guatemala. The group entered the 2022-2023 Incubator with plans to launch a tree nursery to generate additional income through the sale of shade tree seedlings. Prior to joining the Incubator, Jovemcafé had participated in farming and gender training, but never had the opportunity to develop their own initiative. After practicing TCC-recommended community visioning exercises, several members of the organization demonstrated increased leadership capacity, even forming a committee to design a second community-led plan as part of the Incubator: a collective egg-laying hen business to increase income between coffee harvest seasons. The group is now bringing in \$1,000 USD extra per month through their new initiatives. Thanks to their engagement with TCC, Jovemcafé members also report having increased confidence, connections, and capacity to continue turning their future project ideas into realities.

Levels of Support

- \$30,000

Fully fund a participant organization: 30K covers the full cost of one group's participation in the program over the course of two years (15K per year).

- \$15,000

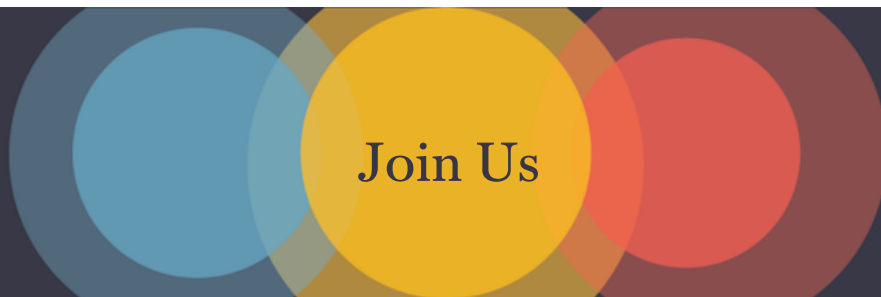
Fund a participant organization for one year: 15K covers the full cost of one group's participation in the program for one year.

- Via coffee

Add an additional premium per pound of coffee sourced from the participant group, and pledge this amount to support them through the Incubator.

- Other

The Chain Collaborative sources funding from a diversity of supply chain and other partners. We are glad to accept support for participant groups at any amount.



We invite impact-driven companies to help us raise \$150,000 over the next two years so we can:

- Support five participant organizations from Latin America who have joined the 2026-2027 Incubator;
 - Conduct leadership development, project design training, and capacity-building activities;
 - Fund and accompany participants' locally-conceived and community-centered projects, positively impacting incomes, education, food security, climate resilience, and equity in coffee regions.

Foundation and Corporate Supporters



Coffee Industry Supporters



To help us put change-making power into the hands of local leaders, contact hello@thechaincollaborative.org.